



Lifelong
Learning
Programme



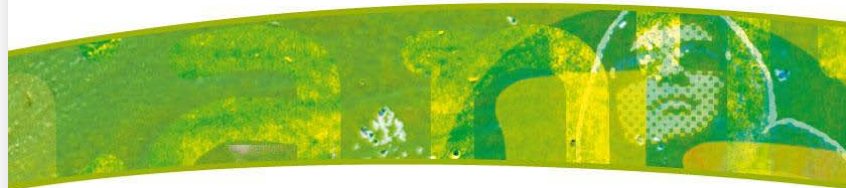
«REAL TALK: THEATRE OF THE OPPRESSED» EYES BEST PRACTICE

SWOT ANALYSIS
WITHIN CANTIERE GIOVANI IN ITALY

IMPLEMENTATION OF THE ACTIVITY

The local session has been tested in the frame of a Seminar on Active citizenship and European projects, involving educators, volunteers, young people participating to the activities of the Youth centre Il Cantiere, citizens.

The test took place on July, 3°.



SEMINARIO/ 3 LUGLIO 2014, ore 18-21

Ciclo Cittadinanza attiva e progetti europei

“REAL TALK”

Affrontare il disagio giovanile attraverso il teatro

Rivolto a cittadini di ogni età coinvolti in associazioni, motivati a fare del volontariato, operatori intenti a occuparsi di soggetti in difficoltà sociali di vario genere.

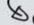
Contenuti

- › Il teatro (Teatro dell'Oppresso) come metodologia educativa per affrontare il disagio giovanile;
- › Introduzione alle opportunità di formazione per adulti offerte dalla Commissione Europea: Lifelong Learning e Grundtvig Program.

*Il seminario si terrà giovedì 3.07 dalle 18.00 alle 21.00
presso il Centro Il Cantiere - Vicolo VI Durante 5, Frattamaggiore (Na)
La partecipazione è gratuita e sarà rilasciato un attestato finale.*

cantieregiovani.org

Info e iscrizioni

 **Cantiere Giovani**

Segreteria: 081.8328076 | Cell. 3348263497

Scaricare la scheda d'iscrizione su www.cantieregiovani.org

REAL TALK WORKSHOP: GALLERY



S.W.O.T ANALYSIS

STRENGTHS

- it fosters the sense of cohesion among participants
- the sharing discussion fosters the awareness about a problem and the research of solutions that can satisfy everybody
- allows the comprehension of a conflict because gives the possibility to experience the different roles of the different players and its different points of view
- it's funny
- allows to deal with a problem in a practical way
- being concrete and direct the scene shows clearly wrong behaviours and wakes up the wish of change
- allows to observe the problem from the outside, without feeling that oneself its involved
- allows to affront delicate issues with a wide-public

S.W.O.T ANALYSIS

WEAKNESSES

- it's difficult to involve in the action all the people implicate in a complex situation of oppression
- it can restrain shy people
- it can be manipulated by the facilitator
- good facilitator it's needed to be successful

S.W.O.T ANALYSIS

OPPORTUNITIES

- the role exchange helps to understand clearly the main aim: the liberation of the oppression
- it's suitable to all targets: everybody can participate and have access to the discussion, fostering everybody's self-expression
- it's a cheap method, understandable to everybody, adapt to a varied audience, it can be run everywhere.
- it can be presented as a show, it can be developed using other media like video, music, ecc.

S.W.O.T ANALYSIS

THREATS

- the institutions can identify the method as not serious
- the facilitator can influence the group (negatively)
- the authorities may not like the method because its capacity to increase the awareness of being abused by the power, and the awareness of having possibilities to change the situation.

THANK YOU!
